



DESCRIPTION

CAT6 FTP 24-port patch panel, KRONE & 110 type, matches and exceeds CAT6 250MHZ connecting hardware specifications, comply with Gigabit Ethernet applications, suitable for interaction and termination of horizontal cabling between devices, equipment and centralized points

APPLICATION

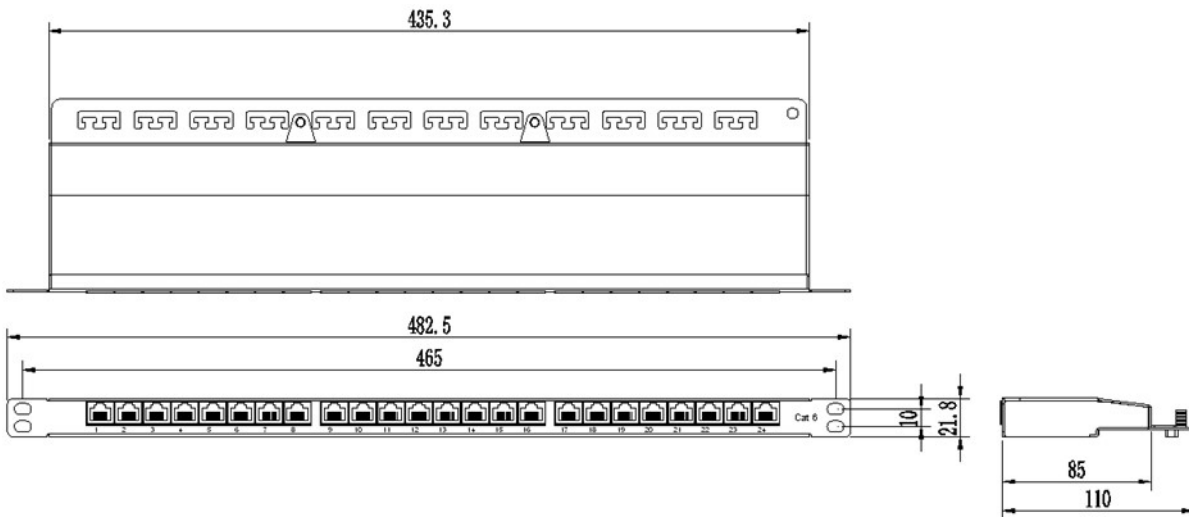
- Unique exterior design, simple, compact and beautiful
- Krone & 110 punch down tools are available
- solid and corrosion phosphor bronze IDC enables over 250 terminations
- Solid and easy installation design saves installation and operation costs
- Be compatible with 19-inch equipment racks, cabinets and wall mount shelf
- All ports are clearly labeled, especially the large in the front are helpful for ports identification
- Phosphor bronze contact with 15 μ , 30 μ , 50 μ gold plate can choose, durability is over 1000 matching recycles
- With cable management in the rear for effective guidance of cables and termination points
- With backward compatibility of CAT6 and lower classes

Ningbo Doppler Communication Co., Ltd.

NO.19, BINHAISAN ROAD, HANGZHOU BAY NEW ZONE, NINGBO, ZHEJIANG PROVINCE, CHINA. 315336

Ningbo Doppler Communication Co. Ltd. reserves the right to change specifications without prior notice

PRODUCT DIMENSION



CONSTRUCTION

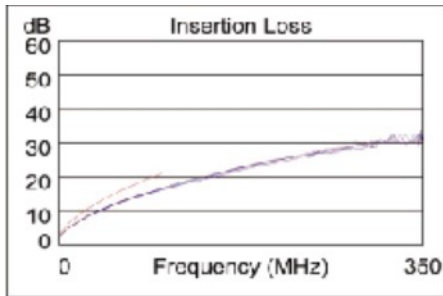
<i>Description</i>	<i>Parameter</i>
Contact resistance(max)	20mΩ
Insulation resistance(min)	500MΩ
Return loss(dB)	5.8dB

PRODUCT PERFORMANCE

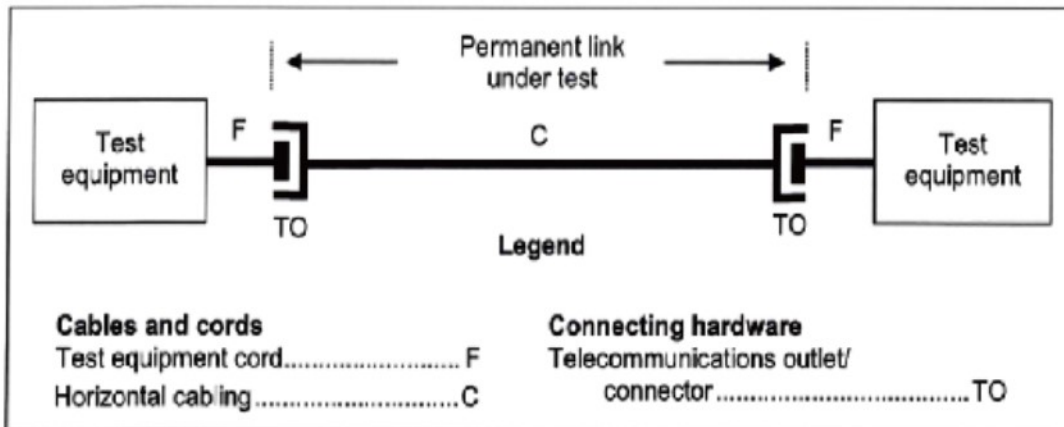
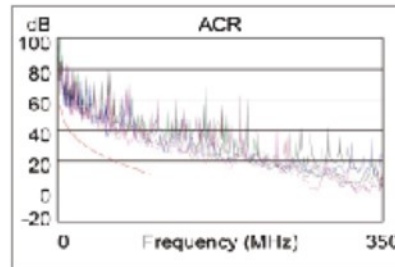
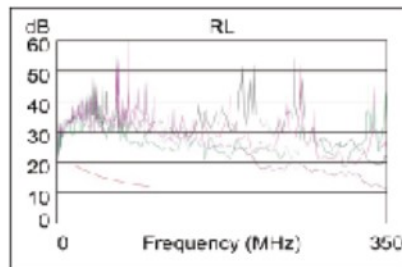
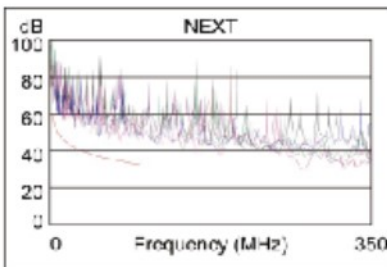
Ningbo Doppler Communication Co., Ltd.

NO.19, BINHAISAN ROAD, HANGZHOU BAY NEW ZONE, NINGBO,ZHEJIANG PROVINCE,CHINA.315336

Ningbo Doppler Communication Co. Ltd. reserves the right to change specifications without prior notice



Length (m), Limit 90.0	[Pair 78]	76.5
Prop. Delay (ns), Limit 498	[Pair 36]	376
Delay Skew (ns), Limit 44	[Pair 36]	6
Resistance (ohms)		N/A
Insertion Loss Margin (dB)	[Pair 36]	4.3
Frequency (MHz)	[Pair 36]	100.0
Limit (dB)	[Pair 36]	21.0



ORDER INFORMATION

Part No.	Description	Color	Inner Box	Carton	Carton measurement (L*W*H)	Weight
LPS124-C6S-0.5U	CAT6 FTP 0.5U 24-port patch panel	Black	1PCS	5PCS	53cm× 31cm × 23cm	8.6KG

Ningbo Doppler Communication Co., Ltd.

NO.19, BINHAISAN ROAD, HANGZHOU BAY NEW ZONE, NINGBO,ZHEJIANG PROVINCE,CHINA.315336

Ningbo Doppler Communication Co. Ltd. reserves the right to change specifications without prior notice