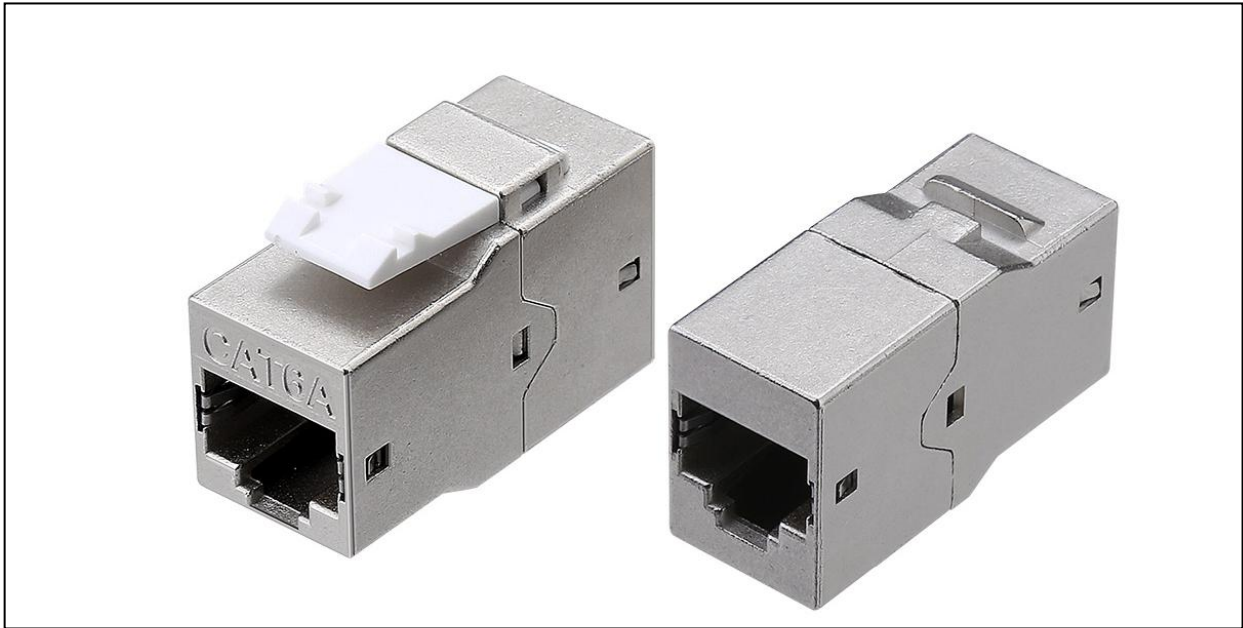
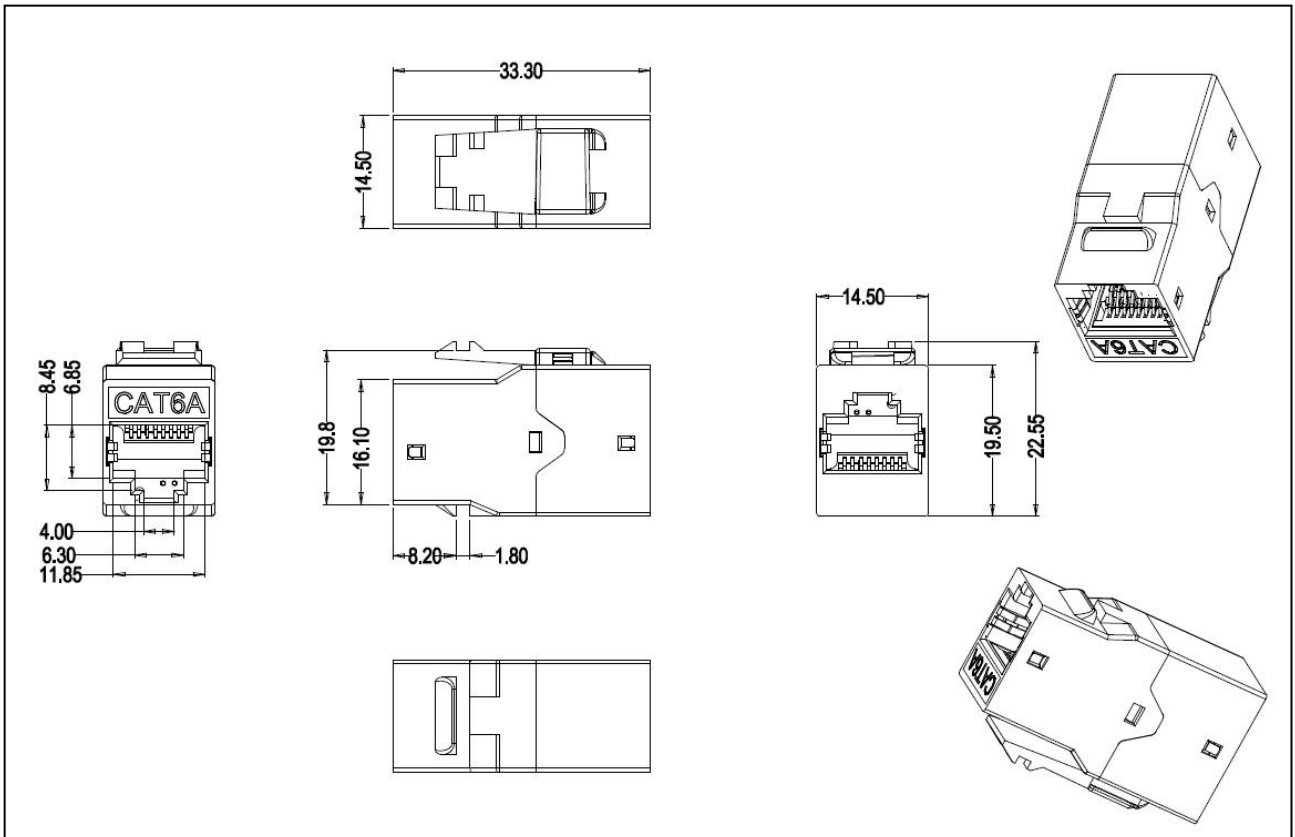


[ 增强六类屏蔽对通信息模块 LKE118-C6AS ]



[ 产品结构图 ]



宁波多普勒通讯有限公司  
Ningbo Doppler Communications Co., LTD.  
地址：浙江省余姚市经济开发区凤仪路86号  
Address : NO.86,fengyi road,economic development zone,  
yuyao city,zhejiang province  
E-mail : sale@dopplercabling.com  
www.dopplercabling.com

业务热线  
联系人：杜先生 手机：13805807079  
邮箱：duj@dopplercabling.com



## [ 产品描述 ]

- 多普勒增强六类屏蔽对通信模块超越了所有六类部件的性能要求，符合万兆以太网应用系统，适用于设备间与工作区的通讯插座连接，可提供高达 500MHz 的可用带宽

## [ 技术特性 ]

- 自主的外观设计，简洁美观更紧凑
- 独特的 PCB 线路板线对平衡设计，减少干扰，通过余量高
- 锌合金整体屏蔽外罩的设计符合屏蔽效果的行业规范
- 接触针触点材料 15u"-50u" 的镀金层可选，耐用性为 750 次插拔
- 具有可向下兼容 CAT6 及更低类别的系统

## [ 传输性能 ]

描述	描述
接触电阻（最大）	20mΩ
绝缘电阻（最小）	500MΩ
回波损耗（dB）	6.2dB

## [ 产品性能 ]



### Cable ID: LKE118-C6AS

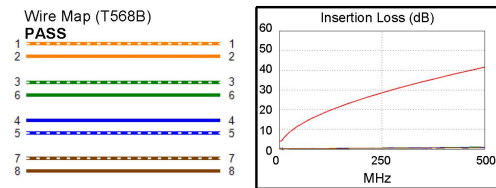
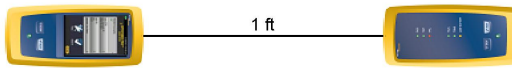
Date / Time: 08/09/2019 10:27:33 AM  
 Headroom 2.9 dB (NEXT 12-45)  
 Test Limit: ISO11801 PL2 Class Ea  
 Cable Type: Cat 6A F/UTP  
 NVP: 74.0%

Software Version: V6.2 Build 1  
 Limits Version: V7.2  
 Calibration Date:  
 Main (Module): 07/12/2019  
 Remote (Module): 07/12/2019

### Test Summary: PASS

Model: DSX-8000  
 Main S/N: 1820424  
 Remote S/N: 1820428  
 Main Adapter: DSX-PLA804  
 Remote Adapter: DSX-PLA804

Length (ft), Limit 295	[Pair 12]	1
Prop. Delay (ns), Limit 496	[Pair 12]	2
Delay Skew (ns), Limit 43	[Pair 12]	0
Resistance (ohms), Limit 20.60	[Pair 12]	0.20
Insertion Loss Margin (dB)	[Pair 36]	39.9
Frequency (MHz)	[Pair 36]	485.0
Limit (dB)	[Pair 36]	40.9



#### Worst Case Margin Worst Case Value

N/A	MAIN	SR	MAIN	SR
Worst Pair	36-45	12-45	12-45	12-45
NEXT (dB)	3.2	2.9	5.2	3.8
Freq. (MHz)	161.0	439.0	500.0	499.0
Limit (dB)	38.5	30.5	27.8	27.9

Worst Pair	45	45	45	45
PS NEXT (dB)	4.8	4.3	5.3	4.4
Freq. (MHz)	153.0	498.0	500.0	500.0
Limit (dB)	36.3	25.1	25.0	25.0

PASS	MAIN	SR	MAIN	SR
Worst Pair	12-45	12-45	12-45	12-45
ACR-F (dB)	13.5	13.5	13.9	13.8
Freq. (MHz)	25.6	12.3	500.0	500.0
Limit (dB)	37.1	43.5	11.3	11.3

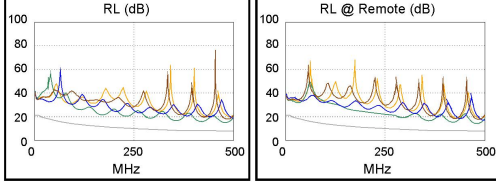
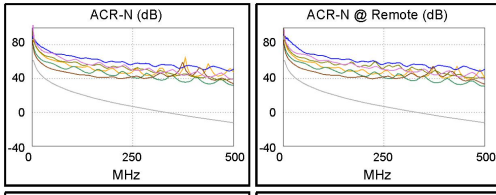
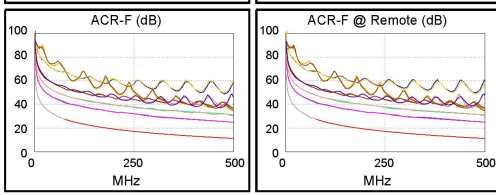
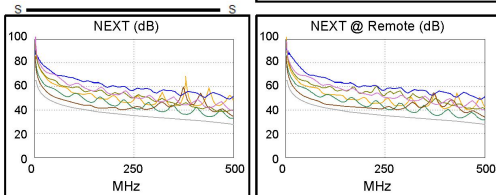
Worst Pair	45	45	45	45
PS ACR-F (dB)	15.2	15.2	15.6	15.6
Freq. (MHz)	6.0	5.0	500.0	500.0
Limit (dB)	46.7	48.3	8.3	8.3

N/A	MAIN	SR	MAIN	SR
Worst Pair	36-45	36-45	12-45	12-45
ACR-N (dB)	12.6	12.6	44.6	43.2
Freq. (MHz)	6.0	6.0	500.0	499.0
Limit (dB)	57.1	57.1	-12.4	-12.3

Worst Pair	45	45	45	45
PS ACR-N (dB)	13.1	13.3	44.8	43.9
Freq. (MHz)	6.0	6.0	500.0	500.0
Limit (dB)	54.8	54.8	-15.3	-15.3

N/A	MAIN	SR	MAIN	SR
Worst Pair	36	36	36	36
RL (dB)	6.9	6.2	6.9	6.2
Freq. (MHz)	481.0	482.0	481.0	482.0
Limit (dB)	8.0	8.0	8.0	8.0

Compliant Network Standards:  
 10BASE-T      100BASE-TX      100BASE-T4  
 1000BASE-T      10GBASE-T      ATM-25  
 ATM-51      ATM-155      100VG-AnyLan  
 TR-4      TR-16 Active      TR-16 Passive



Project: DEFAULT

LKE118.flw



## [ 订购信息 ]

型号	名称	标准颜色	小包装	大包装	外箱尺寸 (L×W×H)	重量
LKE118-C6AS	增强六类屏蔽对通信息模块	银色	50PCS	500PCS	53cm×31cm×23cm	11KG

宁波多普勒通讯有限公司  
 Ningbo Doppler Communications Co., LTD.  
 地址: 浙江省余姚市经济开发区凤仪路86号  
 Address: NO.86, fengyi road, economic development zone,  
 yuyao city, zhejiang province  
 E-mail: sale@dopplercabling.com  
 www.dopplercabling.com

业务热线  
 联系人: 杜先生      手机: 13805807079  
 邮箱: duj@dopplercabling.com

